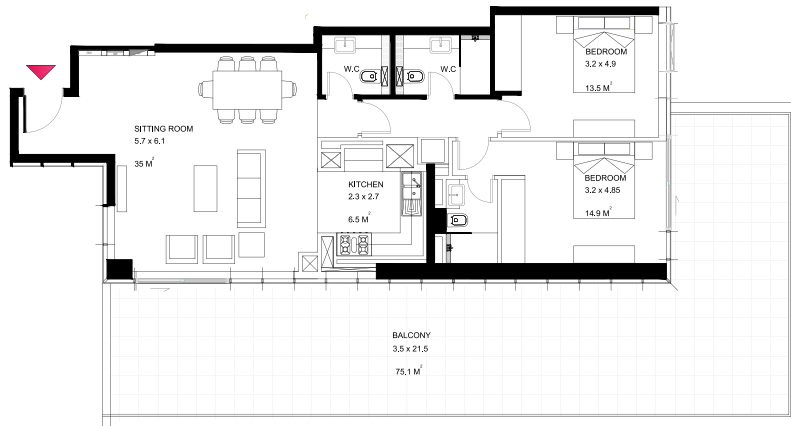
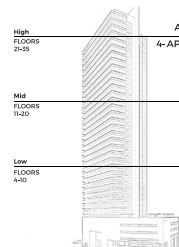




BEDROOM TYPE A6



Internal Size	98 M ² 1,055 sq.ft
Balcony Size	75 M ² 807 sq.ft
Total Size	174 M ² 1,873 sq.ft
Bedroom	2
Bathroom	3
View	Park & Mangrove
Maidroom	0



Key Plan



Disclaimer : Note that this floor plan was produced prior to the completion of construction and is indicative only and not to scale. Changes may be made during the development and areas, fittings, finishes and specifications are subject to change without notice in accordance with the provision of the Contract of Sale. The furniture depicted is not included with any sale and should not be taken to indicate the final positions of power points, TV connections etc. Prospective purchasers must rely on their own enquiries from time to time. Bulkheads necessary for services and structure are not depicted.